

05/09/2025

Harris Lake County Park BID ADDENDUM #2

Project Contact:
Emily Sefranek
Project Coordinator
WithersRavenel
esefranek@withersravenel.com

Notice to All Bidders:

Bidders on this Harris Lake County Park Improvements are hereby notified that this Addendum shall be attached to and made part of the above-named Project Manual dated March 7, 2025.

The following items add to, modify, and clarify the Bidding and Contract Documents and shall have the full force and effect of the original Documents. Bids shall conform to those items and the cost change, if any, of these items shall be included in this Bid Price.

Clarifications

1. Irrigation is not included in the scope of this project.
2. CAD files will not be supplied to bidders. Once a contractor is selected and under contract, CAD files will be provided at that time.

Substitution Requests

1. Babymedi changing tables will not be accepted as a substitution.
2. ADD in the sections listed below the following as acceptable manufacturers, provided that the products that they are providing meet the requirements of the specification section, which qualifies their products:
 - a. Section 074113.16 – Standing Seam Metal Roof Panels
Construction Metal Products – Series 2500
 - b. Section 102800 – Toilet, Bath, and Laundry Accessories, Section 2.2-D “Warm-Air Hand Dryer”
Saniflow Corporation – Speedflow Plus

Questions

1. Just to clarify, everything shown on C1.21 and C3.21 is for alternate 3, 4, and 7 and nothing is included in the base bid?
 - a. **Correct. This also applies to C2.21, C4.21, and C5.21. Alternates 3, 4, and 7 are not included in the base bid.**
2. The specs state that we are required to provide a temporary office on site for the owners use and it must be at least 20’x40’. Is this necessary? Would a smaller office be allowed?
 - a. **The base bid shall include the cost for the temporary office trailer as described in the specifications. The workspace needs to accommodate an office, a bathroom, and space for nine staff members.**

3. The drawings indicate that the wood blinds are to be removed and reinstalled, please advise if new window treatments are required for this project
 - a. New windows and door lites receive new blinds. The wood blinds at existing windows are to be removed and reinstalled.
4. Can you verify that the project is being bid as a classified site, and we will be paid by the unit price for any unsuitable soil or rock that may need to be removed and replaced?
 - a. Any unsuitable soil or rock that may need to be removed and replaced, as directed by the Owner's 3rd party construction materials and testing agency and approved by the Owner, will be paid by the unit price provided on the bid form. Contractors shall carry an allowance for these items as described in the bidding documents. Any allowance remaining at the end of construction shall be credited to the Owner.
5. Will there be any water and sewer capacity use fees? If so, will the owner cover/waive these costs?
 - a. The site operates on well & septic. There will be no capacity fees for water and sewer.
6. Drawing C3.22 note calls out HD Asphalt paving however it seems to be shaded as HD vehicular concrete. Can you verify which is correct?
 - a. The correct material is Heavy Duty Vehicular Concrete. The label will be updated and issued in the conformed set.

Revisions

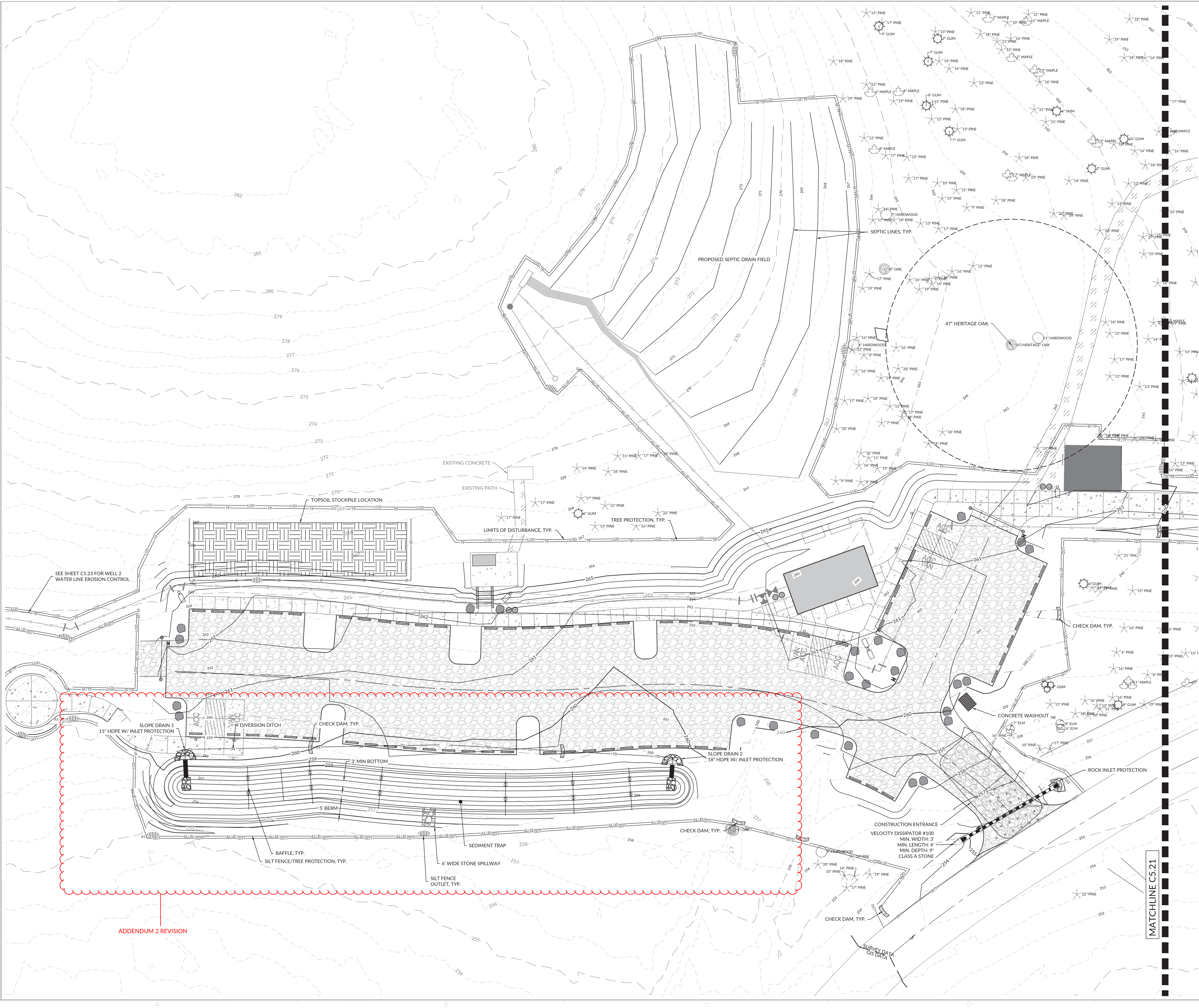
1. Sheet C5.22 – Erosion Control – Disc Golf Parking. Add sediment basin as shown on the plans
2. Sheet M.2.50 – Park Office Details. Refer to Detail A1 General Notes
3. Specification Section 033200.00
 - a. 3.4.H.3
 - i. Revise to, "...make one set of five cylinders..."
 - b. 3.4.H.5 – Remove (field cure not required)
 - c. 3.4.J.4
 - i. Revise to, "Test three cylinders at 28 days. Compressive strength will be the average of the three cylinders."
 - d. 3.4.J.5
 - i. Revise to, "Retain one cylinder for testing when requested by ENGINEER."
4. Specification 312213 Rough Grading
 - a. 2.1.E: Remove SC, CL, ML soil types from unsatisfactory soil. Revise 2% to 3%.
 - b. 3.8.F.1.a: Revise to 95%,
 - c. 3.8.F.3: Revise to 98%
 - d. 3.8.F.4: Revise to "Observed and visually inspected"
5. Specification 312316.13 Trenching
 - a. 2.1.E: Remove SC, SC, ML soils types from unsatisfactory soil. Revise 2% to 3%.



6. Specification 312323 Fill
 - a. 2.1.E: Remove SC, SC, ML soils types from unsatisfactory soil. Revise 2% to 3%.
 - b. 3.5.D.5.a.1: Revise to 95% and ASTM D698
 - c. 3.5.D.5.c: Revise to 98%
 - d. 3.5.D.5.d: Revise to "Observed and visually inspected"
7. Specification 321123 Aggregate Base Courses
 - a. 3.6.A: Revise to 95%
8. Plan Sheet - General Notes
 - a. Grading Note 6: Testing must be in accordance with Specifications and Geotechnical Report.
9. Specification Section 033000 (Architect responsibility)
 - a. 3.13.C.6.a
 - i. Revise to, "Cast and standard cure **five sets of 4-inch by 8-inch** cylindrical specimens for each composite sample."
 - b. 3.13.C.6.b
 - i. Remove field cure requirement
 - c. 3.13.C.7.a
 - i. Revise to, "Test one set of **4-inch by 8-inch standard cure specimens** at seven days, and one set of **three** specimens at 28 days."
 - d. 3.13.C.7.b
 - i. Revise to, "**Retain one cylinder for testing when requested by ENGINEER.**"
 - e. 3.13.C.7.c
 - i. Revise to, "A composite-strength test to be the average compressive strength from a set of **three** specimens obtained from the same composite sample and tested at age indicated."

Attachments:

1. Revised Sheet C5.22 – Erosion Control – Disc Golf Parking
2. Sheet C5.43 – Erosion Control Details (new)
3. Revised Sheet M.2.50 – Park Office Details



EROSION CONTROL LEGEND

SYMBOL	DESCRIPTION
---	LIMITS OF DISTURBANCE
---	SILT FENCE
---	TREE PROTECTION FENCE
---	SILT FENCE/TREE PROTECTION
[Pattern]	TEMPORARY CONSTRUCTION ENTRANCE
[Pattern]	CHECK DAM
[Pattern]	TEMPORARY CONCRETE WASHOUT
[Pattern]	INLET PROTECTION
[Pattern]	ROCK INLET PROTECTION
[Pattern]	SILT FENCE OUTLET

TOTAL DISTURBED AREA (FISHING POND, DISC GOLF PARKING, AND WELL WATERLINE):
140,249 SF (3.18 AC)

WithersRavenel
115 Mackinnon Drive | Cary, NC 27511
License #: F-1479 | t: 919.469.3340 | www.withersravenel.com

CLARK NEXSEN
our people • your success

WAKE COUNTY
NORTH CAROLINA

NCDEQ EROSION CONTROL
HARRIS LAKE
COUNTY PARK IMPROVEMENTS

2112 County Park Dr | New Hill, NC 27562 | Wake County

5/9/2025

0 10 20
SCALE: 1 inch = 20 ft.

W
N
E
S

INITIAL PLAN DATE: 03/07/2025
REVISIONS:
1- 04/18/2025 ADDENDUM 1

WR JOB NUMBER 22-0024-004
DRN: JMD DGN: JMD CKD: JAB

EROSION CONTROL - DISC GOLF PARKING

C5.22

05/09/2025

Harris Lake County Park BID ADDENDUM #2

Project Contact:
Emily Sefranek
Project Coordinator
WithersRavenel
esefranek@withersravenel.com

Notice to All Bidders:

Bidders on this Harris Lake County Park Improvements are hereby notified that this Addendum shall be attached to and made part of the above-named Project Manual dated March 7, 2025.

The following items add to, modify, and clarify the Bidding and Contract Documents and shall have the full force and effect of the original Documents. Bids shall conform to those items and the cost change, if any, of these items shall be included in this Bid Price.

Clarifications

1. Irrigation is not included in the scope of this project.
2. CAD files will not be supplied to bidders. Once a contractor is selected and under contract, CAD files will be provided at that time.

Substitution Requests

1. Babymedi changing tables will not be accepted as a substitution.
2. ADD in the sections listed below the following as acceptable manufacturers, provided that the products that they are providing meet the requirements of the specification section, which qualifies their products:
 - a. Section 074113.16 – Standing Seam Metal Roof Panels
Construction Metal Products – Series 2500
 - b. Section 102800 – Toilet, Bath, and Laundry Accessories, Section 2.2-D “Warm-Air Hand Dryer”
Saniflow Corporation – Speedflow Plus

Questions

1. Just to clarify, everything shown on C1.21 and C3.21 is for alternate 3, 4, and 7 and nothing is included in the base bid?
 - a. **Correct. This also applies to C2.21, C4.21, and C5.21. Alternates 3, 4, and 7 are not included in the base bid.**
2. The specs state that we are required to provide a temporary office on site for the owners use and it must be at least 20’x40’. Is this necessary? Would a smaller office be allowed?
 - a. **The base bid shall include the cost for the temporary office trailer as described in the specifications. The workspace needs to accommodate an office, a bathroom, and space for nine staff members.**

3. The drawings indicate that the wood blinds are to be removed and reinstalled, please advise if new window treatments are required for this project
 - a. New windows and door lites receive new blinds. The wood blinds at existing windows are to be removed and reinstalled.
4. Can you verify that the project is being bid as a classified site, and we will be paid by the unit price for any unsuitable soil or rock that may need to be removed and replaced?
 - a. Any unsuitable soil or rock that may need to be removed and replaced, as directed by the Owner's 3rd party construction materials and testing agency and approved by the Owner, will be paid by the unit price provided on the bid form. Contractors shall carry an allowance for these items as described in the bidding documents. Any allowance remaining at the end of construction shall be credited to the Owner.
5. Will there be any water and sewer capacity use fees? If so, will the owner cover/waive these costs?
 - a. The site operates on well & septic. There will be no capacity fees for water and sewer.
6. Drawing C3.22 note calls out HD Asphalt paving however it seems to be shaded as HD vehicular concrete. Can you verify which is correct?
 - a. The correct material is Heavy Duty Vehicular Concrete. The label will be updated and issued in the conformed set.

Revisions

1. Sheet C5.22 – Erosion Control – Disc Golf Parking. Add sediment basin as shown on the plans
2. Sheet M.2.50 – Park Office Details. Refer to Detail A1 General Notes
3. Specification Section 033200.00
 - a. 3.4.H.3
 - i. Revise to, "...make one set of five cylinders..."
 - b. 3.4.H.5 – Remove (field cure not required)
 - c. 3.4.J.4
 - i. Revise to, "Test three cylinders at 28 days. Compressive strength will be the average of the three cylinders."
 - d. 3.4.J.5
 - i. Revise to, "Retain one cylinder for testing when requested by ENGINEER."
4. Specification 312213 Rough Grading
 - a. 2.1.E: Remove SC, CL, ML soil types from unsatisfactory soil. Revise 2% to 3%.
 - b. 3.8.F.1.a: Revise to 95%,
 - c. 3.8.F.3: Revise to 98%
 - d. 3.8.F.4: Revise to "Observed and visually inspected"
5. Specification 312316.13 Trenching
 - a. 2.1.E: Remove SC, SC, ML soils types from unsatisfactory soil. Revise 2% to 3%.



6. Specification 312323 Fill
 - a. 2.1.E: Remove SC, SC, ML soils types from unsatisfactory soil. Revise 2% to 3%.
 - b. 3.5.D.5.a.1: Revise to 95% and ASTM D698
 - c. 3.5.D.5.c: Revise to 98%
 - d. 3.5.D.5.d: Revise to "Observed and visually inspected"
7. Specification 321123 Aggregate Base Courses
 - a. 3.6.A: Revise to 95%
8. Plan Sheet - General Notes
 - a. Grading Note 6: Testing must be in accordance with Specifications and Geotechnical Report.
9. Specification Section 033000 (Architect responsibility)
 - a. 3.13.C.6.a
 - i. Revise to, "Cast and standard cure **five sets of 4-inch by 8-inch** cylindrical specimens for each composite sample."
 - b. 3.13.C.6.b
 - i. Remove field cure requirement
 - c. 3.13.C.7.a
 - i. Revise to, "Test one set of **4-inch by 8-inch standard cure specimens** at seven days, and one set of **three** specimens at 28 days."
 - d. 3.13.C.7.b
 - i. Revise to, "**Retain one cylinder for testing when requested by ENGINEER.**"
 - e. 3.13.C.7.c
 - i. Revise to, "A composite-strength test to be the average compressive strength from a set of **three** specimens obtained from the same composite sample and tested at age indicated."

Attachments:

1. Revised Sheet C5.22 – Erosion Control – Disc Golf Parking
2. Sheet C5.43 – Erosion Control Details (new)
3. Revised Sheet M.2.50 – Park Office Details